



12.01.2011

## **Reporting Data and Models to GERDA using Aarhus Workbench**

### **Contents**

Introduction .....	1
Data export/upload .....	1
Model export /upload .....	5
Aarhus Workbench LCI-model export.....	5
Aarhus Workbench SCI-model export.....	6

### **Introduction**

The procedure for reporting data and models to GERDA has been changed so that it is now possible to report several interpretations of the same data set (alternative interpretations). This has resulted in a significant change in the reporting procedure for both GERDA and the Aarhus Workbench. First the raw and processed data are uploaded. Subsequently a number of inversions (editions) is uploaded to this dataset

### **Data export/upload**

The necessary steps to export raw and processed data to GERDA is described in the following.

The first two steps are carried out at GERDA's website:



HYDROGEOPHYSICS GROUP

- Create a project at GERDA from GERDA's website.

Oprettelse af projekt

GERDA - Geofysisk Relational Database

Projekt-ident: dk.min.rib.grv-projekt-skytem [Vis tilhørende datasæt](#)

Navn: projekt

Bemærkning: SkyTEM kortlægning ved xxx

FORMÅL\*: saarbarhed vandindvinding

områder: dk.min.rib

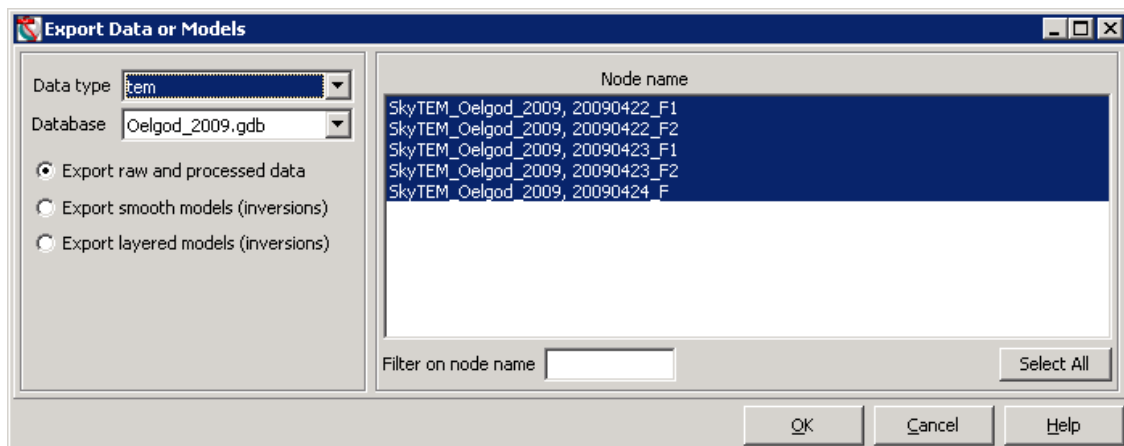
Deltager.Rolle: dk.au.geofysik, contractor  
dk.au.geofysik, consultant  
dk.mim.rin, client

\* skal udfyldes

- Download the template database with the just created projects.  
<http://www.geus.dk/gerda/database-adm-dk.htm>

Next step - Aarhus Workbench

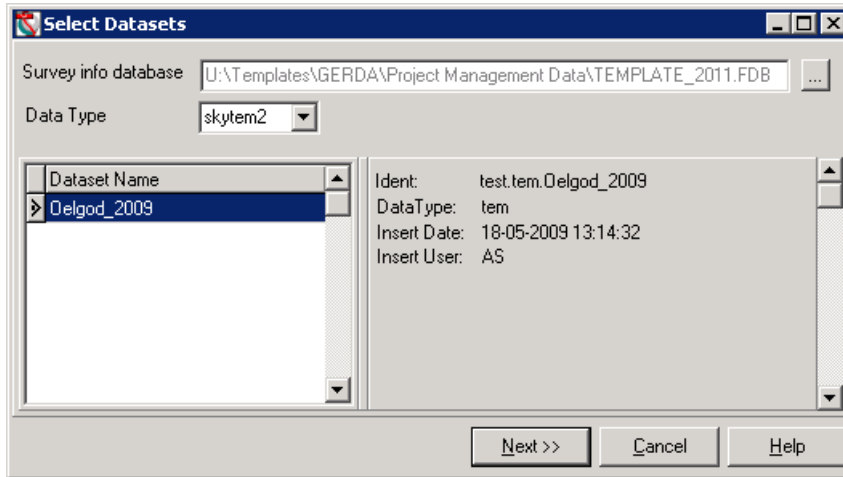
- Export raw and processed data to a new database from a SkyTEM dataset node (**SKY**-node). Right click at the **SKY**-node in the Aarhus Workbench and select "Export Data and Models".



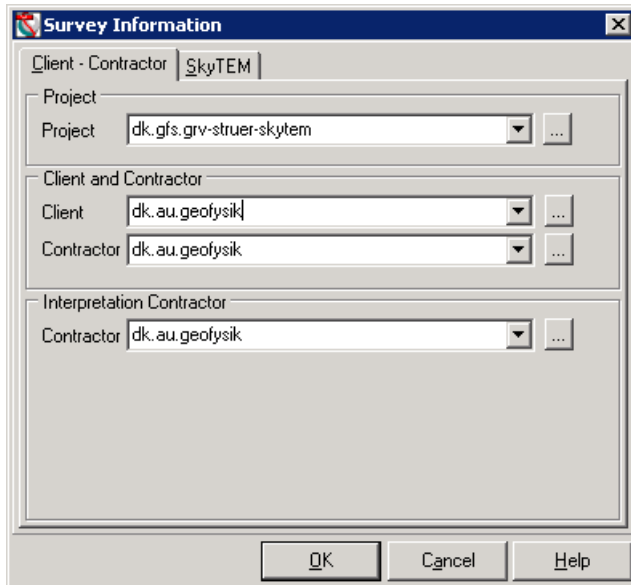
- Select the processing node for export. Select only nodes that have been used for inversion. The raw data are automatically included.
- After export and automatic rebuild of the database, survey info is added, and the dataset must be linked to a GERDA project. Link to the downloaded template database (*Survey info database*) and select a dataset. Note: the displayed Ident is just a temporary

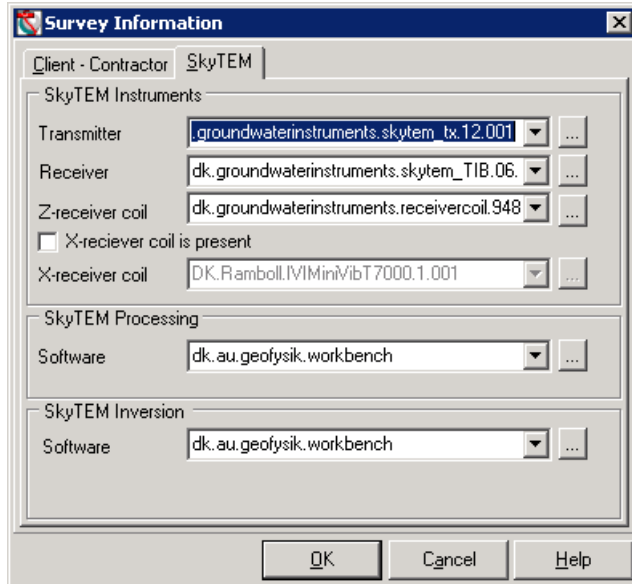


ident at this stage.



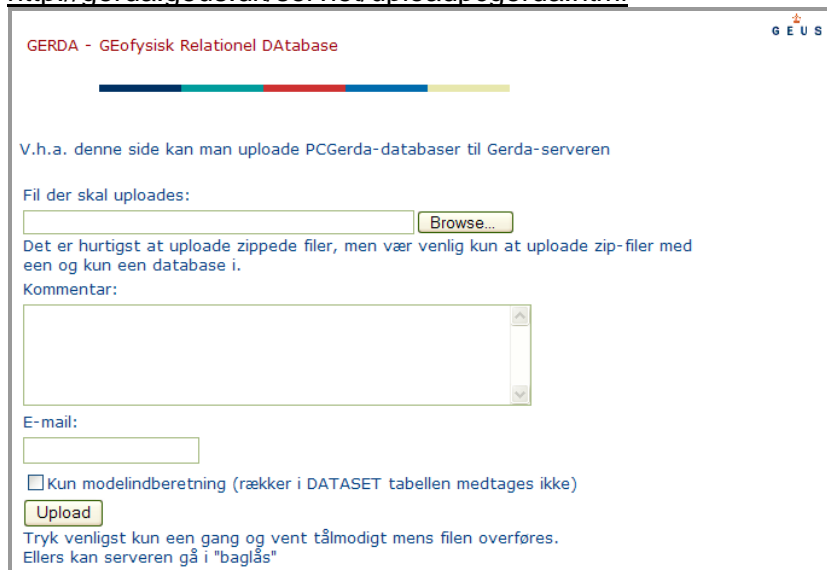
- Fill out the survey info in the two forms below





Next step - GERDA's website

- Upload the exported database to GERDA using GERDA's website.  
<http://gerda.geus.dk/servlet/uploadpcgerda.html>



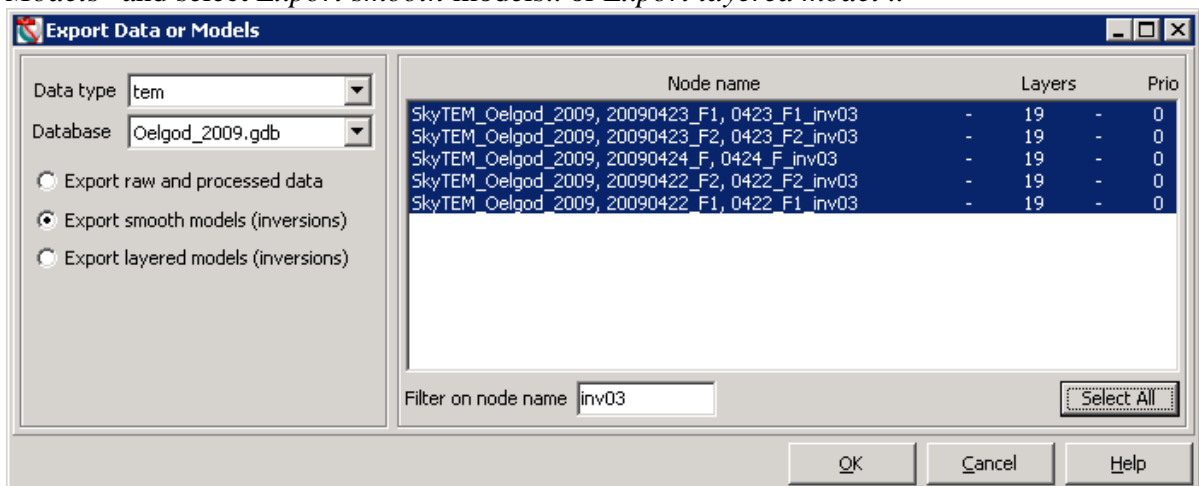


## Model export /upload

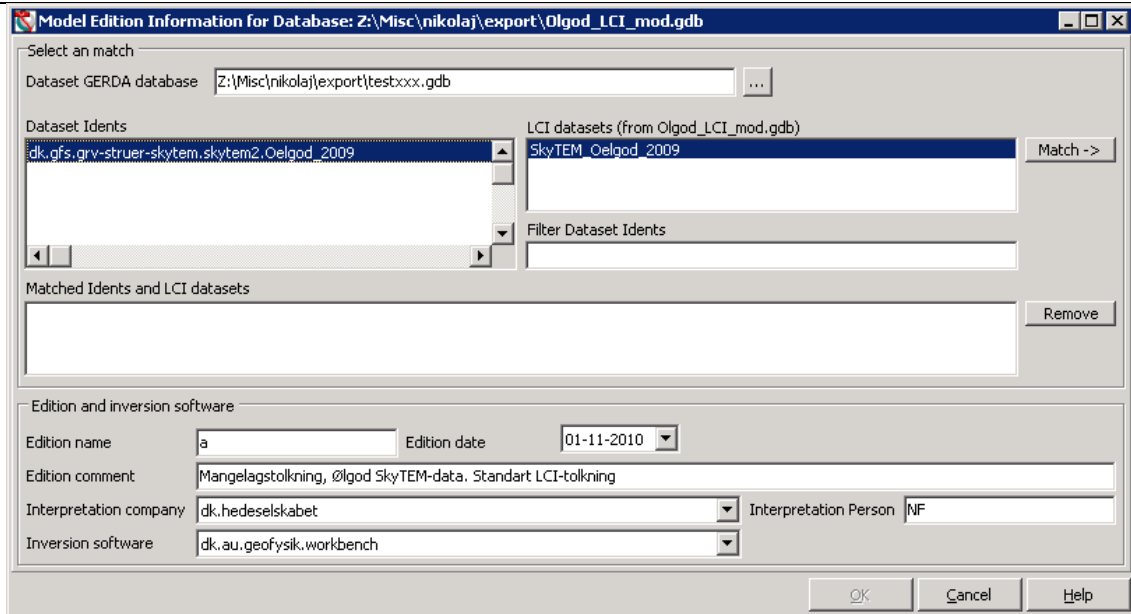
### Aarhus Workbench LCI-model export

The necessary steps to export inversion results to a new database from a LCI dataset node is described in the following::

- Right click at the **SKY**-node in the Aarhus Workbench and select "*Export Data and Models*" and select *Export smooth models..* or *Export layered model ..*



- Select a number of inversion nodes for export, e.g. the final smooth inversion node for each of the processing nodes. Important: For each processing node there should normally only be selected one inversion.
- In the model edition window you must match the LCI-dataset shown in the right right to the dataset idents shown in the left panel. The *Dataset Idents* can 1) be loaded from the database containing the raw data (as explained earlier in this document) or 2) from a GERDA template database downloaded from GERDA web-page AFTER the raw data has been uploaded to GERDA. The latter is the recommended way to do it.

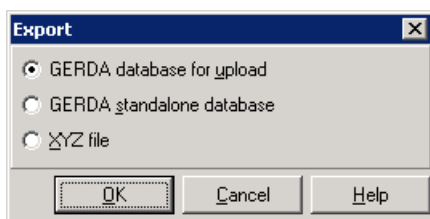


- At this stage, *Edition name*, *Edition date* and *Edition Comment* must be given as well.

## Aarhus Workbench SCI-model export

Exporting SCI inversion node is described in the following:

- Right click at a SCI-inversion node and select *Export Data and models ...* and select *GERDA database for upload*. This opens the same *Models edition forms* as for LCI.



- Use the same procedure as for LCI-model on the *Models edition forms*. Note that a SCI-inversion may include more than one data set and therefore several Dataset Idents <> SCI datasets pairs must be created.
- Upload the exported LCI or SCI model-databases to GERDA from GERDA's website. Remember to select "*Kun model indberetning*".  
Important: The data par must be uploaded and confirm by GERDA/GEUS before the model databases are uploaded.



DEPARTMENT OF EARTH SCIENCES

FACULTY OF SCIENCE  
AARHUS UNIVERSITY

HYDROGEOPHYSICS GROUP

## Upload af PCGerda-databaser og LAS-filer



GERDA - GEofysisk Relationel DATABASE

V.h.a. denne side kan man uploade PCGerda-databaser til Gerda-serveren

Fil der skal uploades:

Det er hurtigst at uploade zippede filer, men vær venlig kun at uploade zip-filer med en og kun en database i.

Kommentar:

E-mail:

Kun modelindberetning (rækker i DATASET tabellen medtages ikke)

Tryk venligst kun een gang og vent tålmodigt mens filen overføres.