



25.05.2011

Reporting Data and Models to GERDA using Aarhus Workbench

Contents

Introduction	1
Data export/upload	1
Model export /upload	5
Aarhus Workbench LCI model export	5
Aarhus Workbench SCI model export	6
Upload LCI/SCI models to GERDA	7

Introduction

The procedure for reporting data and models to GERDA has been changed so that it is now possible to report several interpretations of the same data set (alternative interpretations). This has resulted in a significant change in the reporting procedure for both GERDA and the Aarhus Workbench. First the raw and processed data are uploaded. Subsequently a number of inversions (editions) are uploaded to this dataset

Data export/upload

The necessary steps to export raw and processed data to GERDA are described in the following.

The first two steps are carried out from GERDA's website:

- Create a project at GERDA from GERDA's website.



Oprettelse af projekt

GERDA - Geofysisk Relational Database

Projekt-ident: dk.min.rib.gry-projekt-skytem * [Vis tilhørende datasæt](#)

Navn: projekt *

Bemærkning: SkyTEM kortlægning ved xxx

FORMÅL* saarbarhed vandindvinding Rediger

områder dk.min.rib Rediger

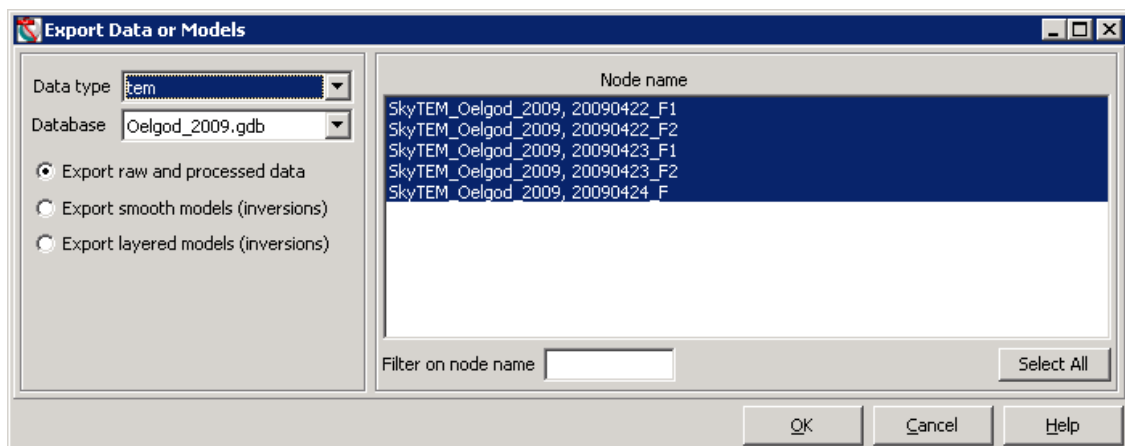
Deltager,Rolle dk.au.geofysik, contractor
dk.au.geofysik, consultant
dk.min.rib, client Rediger

* skal udfyldes

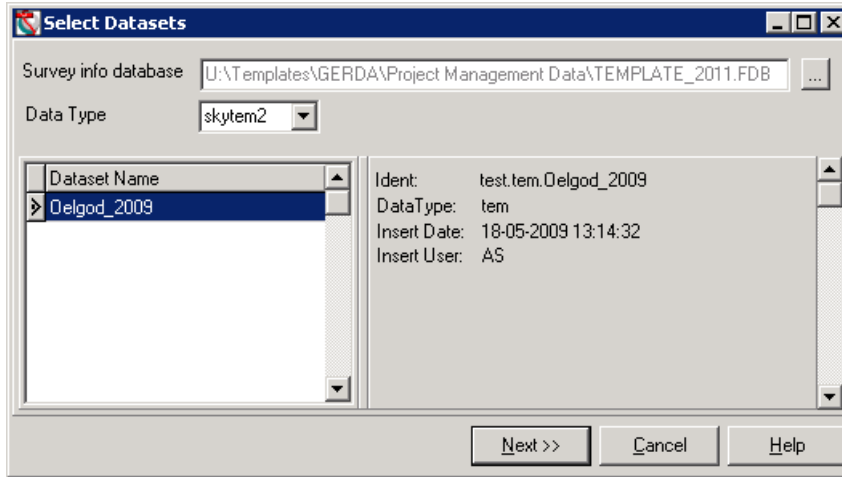
- Download the template database with the just created projects.
<http://www.geus.dk/gerda/database-adm-dk.htm>

Next step - Aarhus Workbench

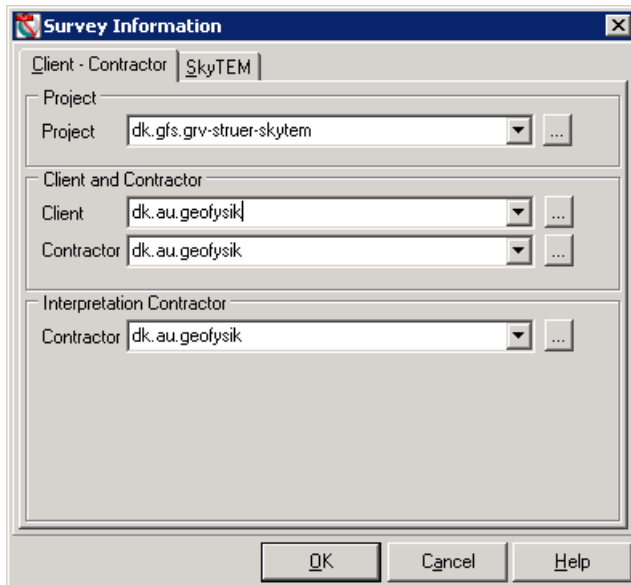
- Export raw and processed data to a new database from a SkyTEM dataset node (**SKY**-node). Right-click on the **SKY**-node in the Aarhus Workbench and select "*Export Data and Models*".

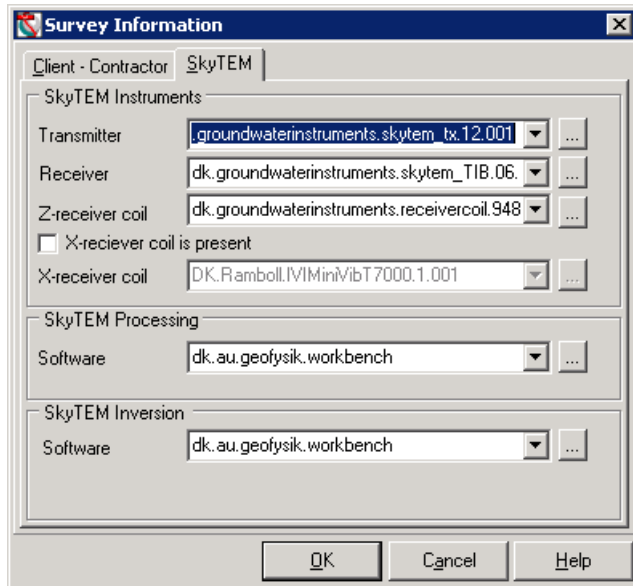


- Select the processing node for export. Select only nodes that have been used for inversion. The raw data are automatically included.
- After export and automatic rebuilding of the database, survey info is added, and the dataset must be linked to a GERDA project. Link to the downloaded template database (*Survey info database*) and select a dataset. Note: the displayed Ident is just a temporary ident at this stage.



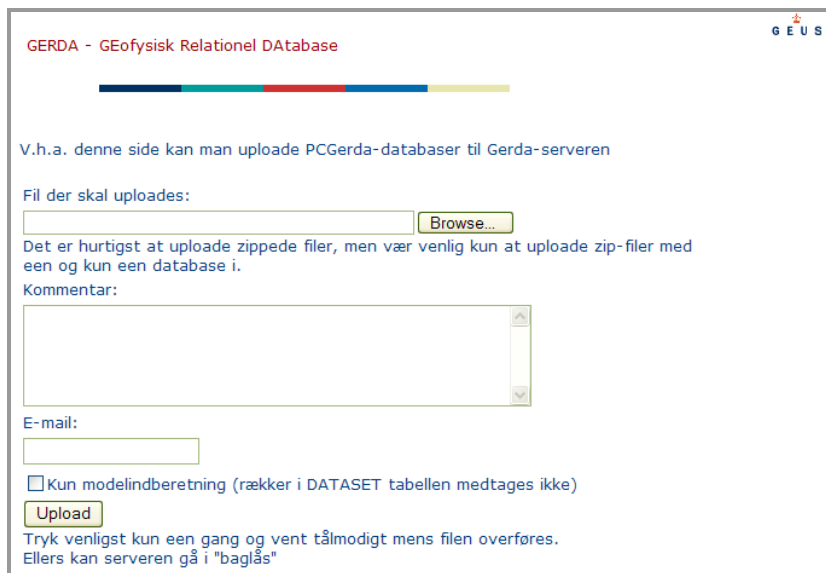
- Fill in the survey info in the two forms below





Next step - GERDA's website

- Upload the exported database to GERDA using GERDA's website.
<http://gerda.geus.dk/servlet/uploadpcgerda.html>



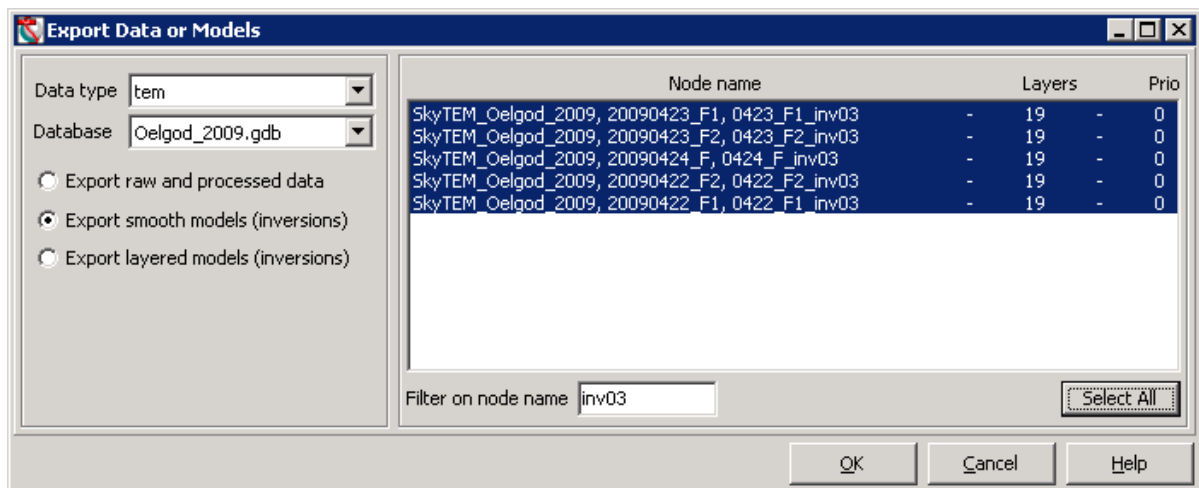


Model export /upload

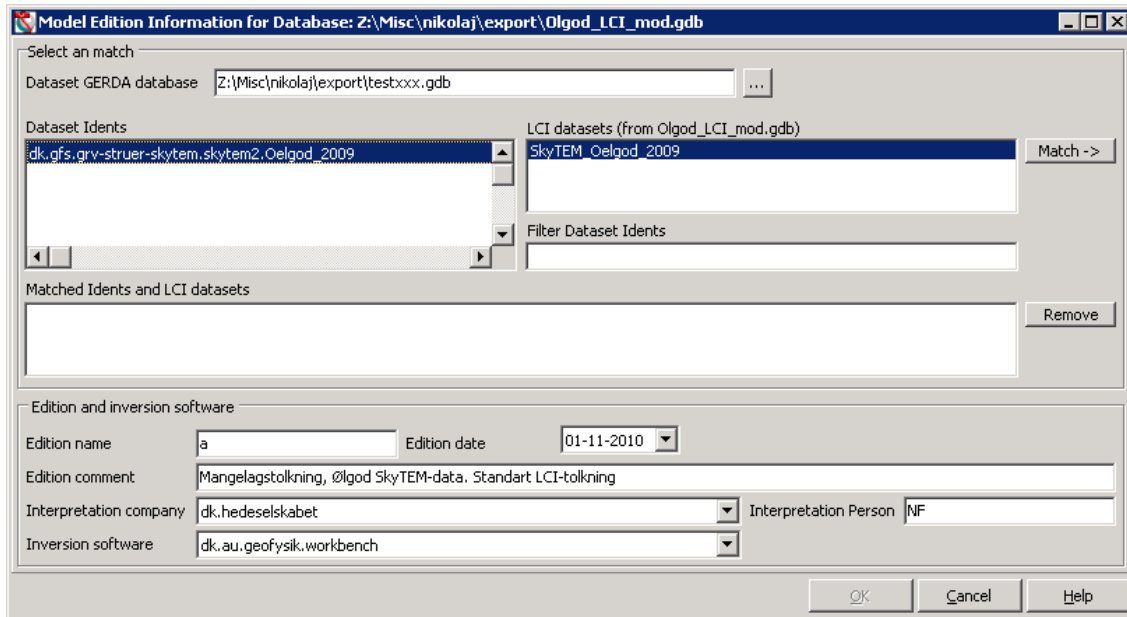
Aarhus Workbench LCI model export

The necessary steps to export inversion results to a new database from an LCI dataset node is described in the following::

- Right-click on the **SKY**-node in the Aarhus Workbench, select "*Export Data and Models*" and then *Export smooth models.* or *Export layered models ..*



- Select a number of inversion nodes for export, e.g. the final smooth inversion node for each of the processing nodes. Important: For each processing node, only one inversion should normally be selected.
- In the model edition window you must match the LCI-dataset shown to the right of the dataset idents shown in the left panel. The *Dataset Idents* can be loaded
 1. From the exported database containing the raw data (as explained earlier in this document) or
 2. From a GERDA template database downloaded from GERDA's webpage AFTER the raw data have been uploaded to GERDA. The latter is the recommended way to do it.

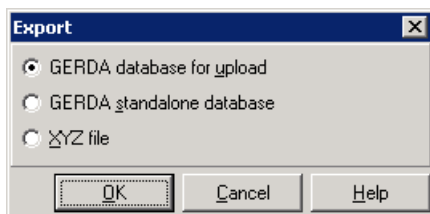


- At this stage, add also *Edition name*, *Edition date* and *Edition comment*. *Edition name* is the name of the edition and will become a part of the model ident. *Edition date* is the date assigned to the edition. *Edition comment* holds a short comment to the edition. See GERDA web-page <http://www.geus.dk/gerda/modelections-dk.htm> for further edition/ident specifications.

Aarhus Workbench SCI model export

Export of an SCI inversion node is described in the following:

- Right-click on an SCI inversion node, select *Export Data or models ...* and then *GERDA database for upload*. This opens the same *Model edition forms* as for LCI.



- Use the same procedure as for the LCI model on the *Model edition forms*. Note that an SCI inversion may include more than one dataset, and therefore several Dataset Idents <> SCI dataset pairs must be created.




Upload LCI/SCI models to GERDA

- Upload the exported LCI or SCI model databases to GERDA from GERDA's website.
Note:
 1. Select “*Kun modelindberetning*”.
 2. The data must be uploaded and confirmed by GERDA/GEUS before the model databases are uploaded.

Upload af PCGerda-databaser og LAS-filer

GERDA - Geofysisk Relational Database



V.h.a. denne side kan man uploade PCGerda-databaser til Gerda-serveren

Fil der skal uploades:

Det er hurtigst at uploade zippede filer, men vær venlig kun at uploade zip-filer med en og kun en database i.

Kommentar:

E-mail:

Kun modelindberetning (rækker i DATASET tabellen medtages ikke)

Tryk venligst kun een gang og vent tålmodigt mens filen overføres.